



## STAIRKING POWER APPLIANCE TRUCK

### Operating Instructions and Parts Manual

**ATTENTION:** To insure proper use of your WESCO STAIRKING POWER APPLIANCE TRUCK, read these instructions thoroughly before using. It is important that all personnel, involved with the installation, maintenance or operation of the appliance truck, read this manual and **VIEW THE INSTRUCTIONAL VIDEO SHIPPED WITH EACH UNIT.**

### Specifications

See the nameplate on the unit for capacity, model number and truck serial number.

This product is manufactured by:

WESCO Industrial Products, Inc.  
P.O. Box 47

Lansdale, PA 19446

Tel: 215-699-7031 FAX: 215-699-3836

Contact the factory if you have start-up problems after reading these instructions, or for parts information and parts ordering.

### Unpacking

When unpacking your unit, check carefully for shipping damage. If damage has occurred, file a claim with the delivering carrier within 24 hours and notify the dealer from whom the unit was purchased.

### Start-up

With the appliance truck in the upright position, proceed with the following:

- (1) Connect the battery by connecting the yellow quick disconnect terminals. The terminals will only connect one way to prevent accidental reversal of polarity.
- (2) Run truck with no load to be sure the gearmotor is operating and driving the lift roller chains.
- (3) Do not use appliance truck if it appears to be damaged or defective in anyway.

### General Safety Information

**WARNING:** WESCO StairKing Power Appliance Trucks are intended for a wide range of uses. To insure proper use, the following instructions must be adhered to:

- (1) **BEFORE OPERATING TRUCK VIEW THE TRAINING VIDEO AND PRACTICE GOING UP AND DOWN STEPS WITHOUT A LOAD. A TRAINING VIDEO IS SHIPPED WITH EACH UNIT.**
- (2) Do not allow personnel other than the operator on the stairway or below the appliance truck while in operation.

- (3) When not in use disconnect battery to prevent usage by unauthorized personnel.
- (4) Do not allow inexperienced personnel to operate the appliance truck.
- (5) Do not exceed rated maximum capacity of 850 lbs.
- (6) Additional personnel may be required to assist in balancing heavy load. Once load is balanced, do not allow additional personnel on the stairway or below the appliance truck while in operation.

### Operation

#### A. MOVING A LOAD UP STAIRS:

- (1) Position load in center of handtruck. When in position, secure the load using belt.
- (2) Place handtruck with load in place against the edge of the stair tread with **BOTH** guidebelts against the edge of the step.
- (3) Standing on the first step pull the truck so the stairglides rest against the step. Pull the load back towards you. When balanced push the switch to the "UP" position. The lifting rollers will rotate around and contact the stair tread, lifting the truck wheels up and over the step.

**NOTE:** A change in the center of gravity will occur when the load shifts from the truck wheels to the lifting rollers. Keeping the weight slightly toward the operator will compensate for the change in center of gravity. The handtruck will do the lifting, the operator must balance the load.

- (4) Repeat this process for each step climbed.

#### B. MOVING A LOAD DOWN STAIRS:

- (1) Position truck wheels about 2 inches away from the leading edge of the stair.
- (2) Push the switch to "DOWN" position, the lifting rollers will lift the truck wheels up and over the edge and start down the stairs. The operator must keep the load balanced.
- (3) Repeat this process for each step climbed.

## Maintenance

**WARNING:** Battery should be recharged on a regular basis. Repeated total discharge of battery can result in battery failure.

### A. Battery

- (1) Check charge level with voltmeter.
- (2) Check for corroded and loose terminals.
- (3) Visually inspect for any cracks or damage to battery casing.
- (4) Check for loose battery tie-down.
- (5) Always fully charge the battery after each use.
- (6) **NEVER** deeply discharge the battery, this will shorten the life of the battery.
- (7) **NEVER** drain the battery all the way before charging.
- (8) **NEVER** operate the StairKing with a deeply discharged or worn out battery.

### B. Drive Assembly (Smaller Chains)

- (1) Lubricate drive chains with a rust inhibitor, this will extend the life of the chains.
- (2) Check chain tension, chain should be tight. To tighten the drive chains, first loosen the motor mounting plate bolts (see figure 1). Turn the vertical adjustment screws located on bottom of the motor mounting plate. Chains should be tightened evenly. Re-tighten motor mounting plate bolts.

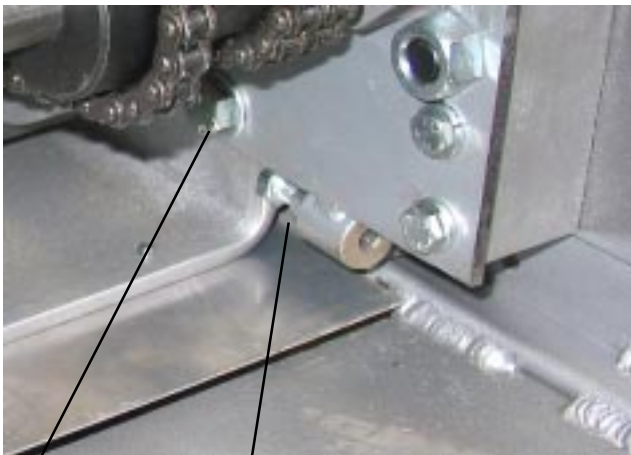
**WARNING:** Never attempt to operate your StairKing Appliance Truck with loose drive chains.

### C. Lift Assembly (Larger chains)

- (1) Lubricate drive chains with a rust inhibitor, this will extend the life of the chains.
- (2) Always make sure lift chains are firm. To tighten the lifting chains, first loosen the locking bolts (see figure 2) holding slide bearing plates. Turn the vertical adjustment bolts located at the bottom of the side plate to adjust the tension on the chains. Chains should be tightened evenly. Retighten the locking bolts.

### D. Battery Charging

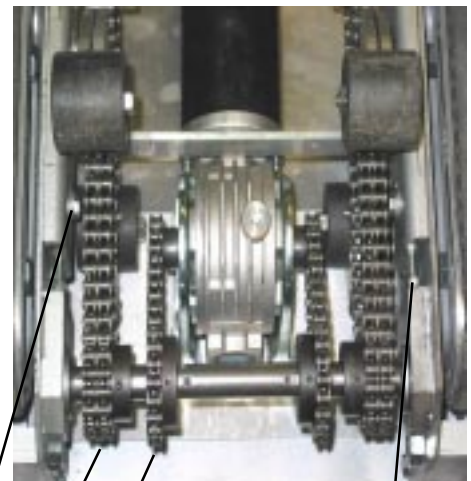
- (1) Disconnect the battery from the StairKing by disconnecting the yellow quick-disconnect terminals.
- (2) Connect the yellow terminals from the charger to the yellow terminals on the battery wires. The terminals will only connect one way to prevent accidental reversal of polarity.
- (3) Plug in the charger to a grounded AC wall outlet (110V) outlet. The red LED light will illuminate continuously indicating that charging is in process. This can be verified by putting a voltmeter across the battery terminals and noticing an increase in voltage. When battery is fully charged the red LED light will turn off.



Motor Mounting Plate Bolt  
(2) Per Side

Drive Assembly  
Adjusting Screw

**Figure 1**



Locking Bolt  
(2) Per Side

Drive Chain

Lift Assembly Chain

Lift Assembly  
Adjusting Screw

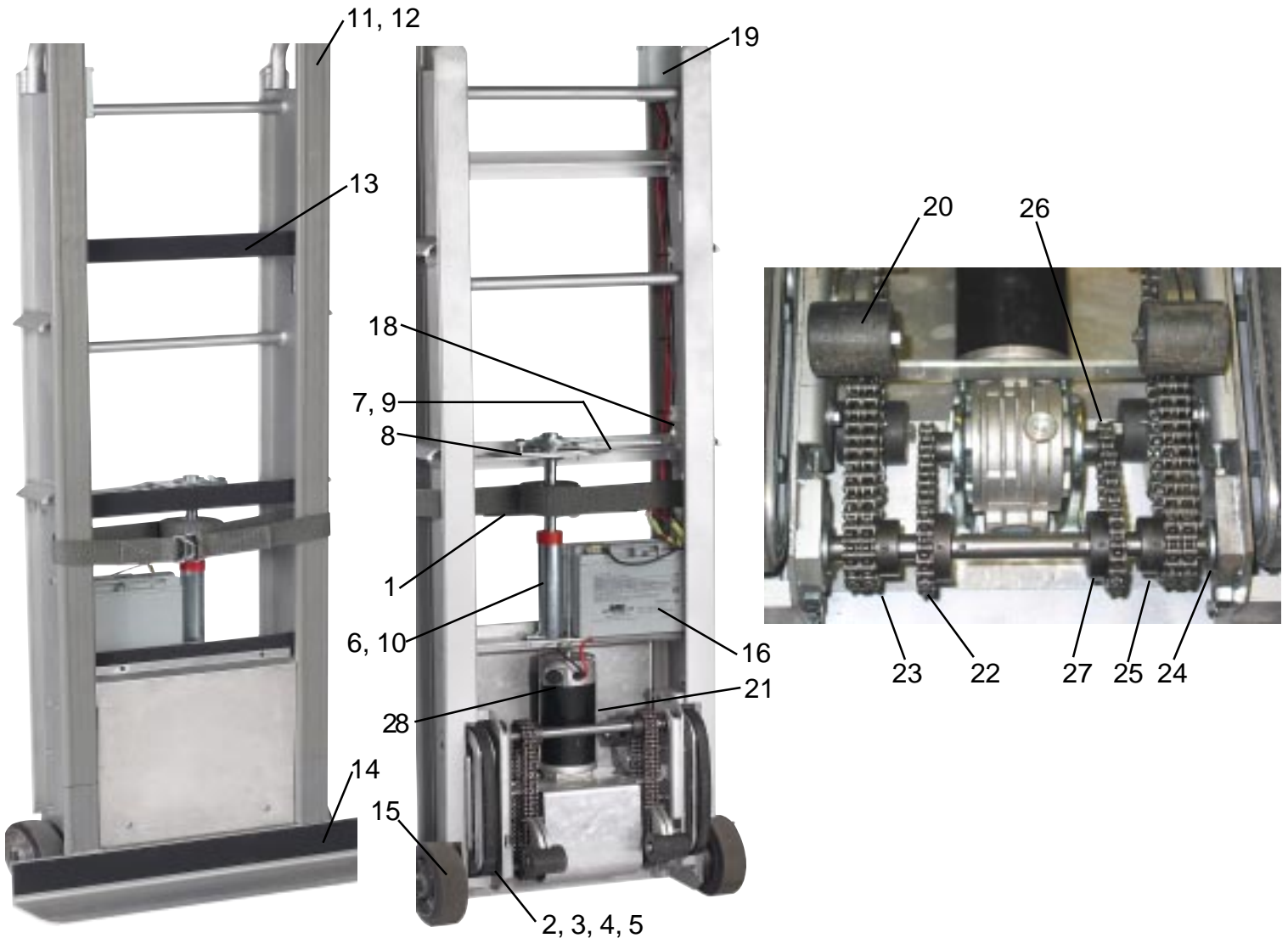
**Figure 2**

## STAIRKING PARTS LIST

### Basic Truck

### Power Unit

ITEM	QTY	PART NO.	DESCRIPTION	ITEM	QTY	PART NO.	DESCRIPTION
1	1	053120	Belt with Front Clasp	16	1	109307	Battery
2	2	150013	Stairclimber	17	1	109311	Charger
3	1	108229	"V" Belt: Stairclimber	18	1	109324	Circuit Breaker
4	2	150014	Plate, Side: Stairclimber	19	1	109306	Switch
5	-	150017	Bearing: stairclimber (44) required per stairclimber	20	4	106180	Lift Roller
6	1	053327	Ratchet: Auto Rewind Unit	21	1	109070	Gearmotor
7	1	052001	Handle Assembly: Ratchet	22	1	051817	Kit: Drive Chain
8	1	230050	Holding Dog Assembly	23	1	051818	Kit: Lift Roller Chain
9	1	151250	Spring: Handle	24	4	109312	Bearing
10	1	150921	Spring: Auto Rewind	25	4	050623	Sprocket: #35-2, 17 Teeth
11	2	108540	Rubber: Channel 66"	26	2	050624	Sprocket: #35, 10 Teeth
12	2	109323	Rubber: Channel 72"	27	2	050625	Sprocket: #35, 20 Teeth
13	3	109688	Rubber: Crossbrace	28	1	270399	Brush: Motor (pair)
14	1	108688	Rubber: Noseplate				
15	2	050567	Wheel				



### Warranty Repairs

If unit does not work properly, contact your dealer or the factory (215-699-7031), within one year of purchase date.

### Non-Warranty Service

For units older than one year, repairs can be made easily on site with factory supplied parts, or repairs can be made at the factory. **NOTE: Do not send units to the factory for service without obtaining a "returned materials authorization" (RMA) number from the service department. We will not be responsible for goods returned without proper authorization.**

### To Purchase Parts

A complete parts list with drawings appears in this manual. **To order parts** contact the factory at the phone or fax numbers shown on page 1 of this manual. **Ask for the Customer Service Department.**

**WARNING: CHARGER (P/N 109311) IS ESPECIALLY DESIGNED FOR USE WITH WESCO BATTERY (P/N 109307), USE OF BATTERIES OTHER THAN WESCO'S MAY RESULT IN DAMAGE TO CHARGER, AND WILL VOID ALL WARRANTIES.**

## TROUBLESHOOTING

Problem	Check	Service Required
Stair King does not operate. (Motor does not run)	Battery charge Loose ground wire. Battery terminals and cables  Circuit breaker Motor brushes	Charge battery. Tighten. Clean if corroded (white powder). Tighten terminal screws. Replace, check by bypassing breaker. Check for wear, excess wear replace.
StairKing does not operate. (Motor runs)	Drive chains	Tighten drive chains. See "Maintenance"
StairKing runs slow.	Battery charge  Charger  Bad switch causing resistance.	Check battery condition with voltmeter, should read 12 volts under load. Check output of charger while battery is connected, should read 13-14 volts.  Replace switch.

### LIMITED WARRANTY

Wesco Industrial Products, Inc. (WESCO) warrants to the purchaser of this product for a period of one year from the date of purchase that this product shall be free of defects in material and/or workmanship, as follows:

1. WESCO will supply, at no charge, new or rebuilt replacements for any part that fails through a defect in material and/or workmanship during the warranty period. To obtain warranty service, you must deliver the product prepaid, to the WESCO factory.
2. This warranty does not cover any product or product part which has been subject to accident, misuse, abuse or negligence. WESCO shall only be liable under this warranty if the product is used in the manner intended by the manufacturer as specified in the written instructions furnished with this product.

REPAIR OR REPLACEMENT AS PROVIDED UNDER THIS WARRANTY IS THE EXCLUSIVE REMEDY OF THE PURCHASER. ANY EXPRESS WARRANTY NOT PROVIDED IN THIS WARRANTY DOCUMENT, AND ANY REMEDY FOR BREACH OF CONTRACT THAT, BUT FOR THIS PROVISION, MIGHT ARISE BY IMPLICATION OR OPERATION OF LAW, IS HEREBY EXCLUDED AND DISCLAIMED. UNDER NO CIRCUMSTANCES SHALL WESCO BE LIABLE TO PURCHASER OR ANY OTHER PERSON FOR ANY INCIDENTAL OR CONSEQUENTIAL DAMAGES, WHETHER ARISING OUT OF BREACH OF WARRANTY, EXPRESS OR IMPLIED, A BREACH OF CONTRACT OR OTHERWISE. EXCEPT TO THE EXTENT PROHIBITED BY APPLICABLE LAW, ANY IMPLIED WARRANTY OF MERCHANTABILITY AND FITNESS FOR ANY PARTICULAR PURPOSE ARE EXPRESSLY LIMITED IN DURATION TO THE DURATION OF THIS LIMITED WARRANTY.

Some states do not allow the exclusion or limitation of incidental or consequential damages, or allow limitations on how long any implied warranty lasts, so the above limitations may not apply to you. This warranty gives you specific legal rights, and you may also have other rights which vary from state to state.